



IBETO HEIGHTS

BY ELARA



Redefining LUXURY LIVING IN LAGOS' VIBRANT HEART

A sophisticated icon of luxury, elegance, and innovation, Ibeto Heights stands proudly at No. 2, Idowu Taylor, Victoria Island, Lagos. With 12 floors of masterfully designed living spaces and world-class amenities, Ibeto Heights offers an unmatched urban lifestyle in Nigeria's premier location.

www.elaradev.com



WELCOME TO IBETO HEIGHTS

Where Luxury Meets Modernity

Nestled in the heart of Victoria Island, Ibeto Heights is more than a residence; it's a statement of sophistication. Created by Elara, Ibeto Heights reflects a vision for premium living, with each detail thoughtfully crafted to elevate your lifestyle. From its contemporary architecture to the exclusive amenities and panoramic views of the city skyline, Ibeto Heights is a home that redefines urban living.





The lifestyle you deserve.

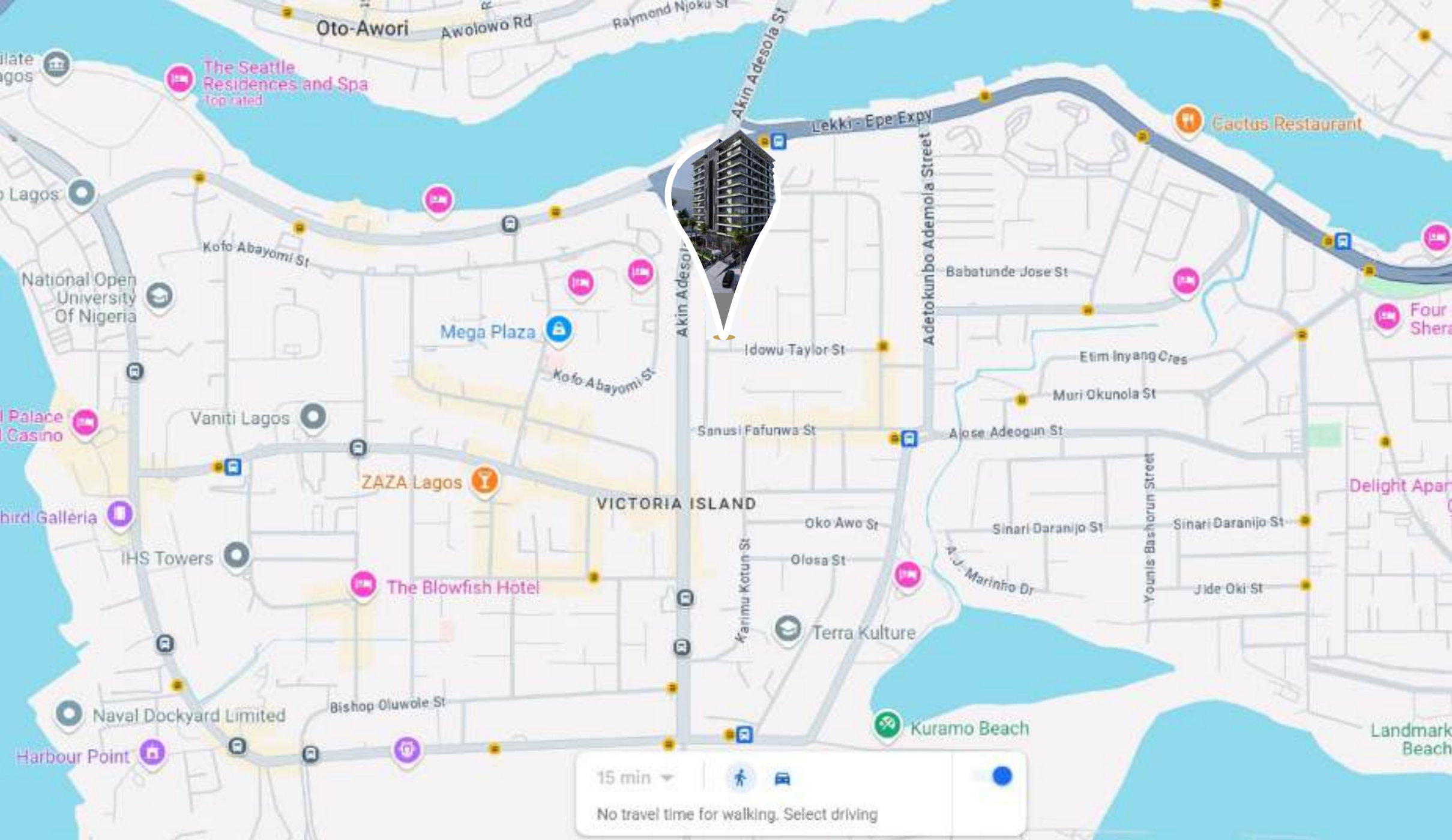


*2, Idowu Taylor Street,
Victoria Island, Lagos*

THE HEART OF LAGOS

Unparalleled Access, Unmatched Address

Located on Idowu Taylor in the heart of Victoria Island, Ibeto Heights places you within reach of Lagos' finest dining, entertainment, and business districts. This premier location provides both the convenience of an urban lifestyle and the exclusivity of a serene haven. Embrace the best of Lagos from a residence designed for those who seek the extraordinary.



STEP INTO GRANDEUR

The 5-Star Welcome at Ibeto Heights

A harmonious blend of luxury and sophistication. Designed to impress, this premier space seamlessly blends timeless architecture with modern opulence, offering residents and guests an unforgettable first impression. From its soaring ceilings to its meticulously curated finishes, the grand lobby sets the tone for an unparalleled lifestyle of comfort and prestige.





CRAFTED FOR COMFORT AND STYLE

From 2-Bedroom Apartments
to 4-Bedroom Penthouses

Each unit at Ibeto Heights is meticulously designed to blend comfort with sophistication. Whether you choose a 2-bedroom, 3-bedroom apartment, or an expansive 4-bedroom penthouse, every space has been curated to enhance your living experience. Modern interiors, spacious layouts, and floor-to-ceiling windows offer an abundance of natural light, creating a seamless balance of style and function.

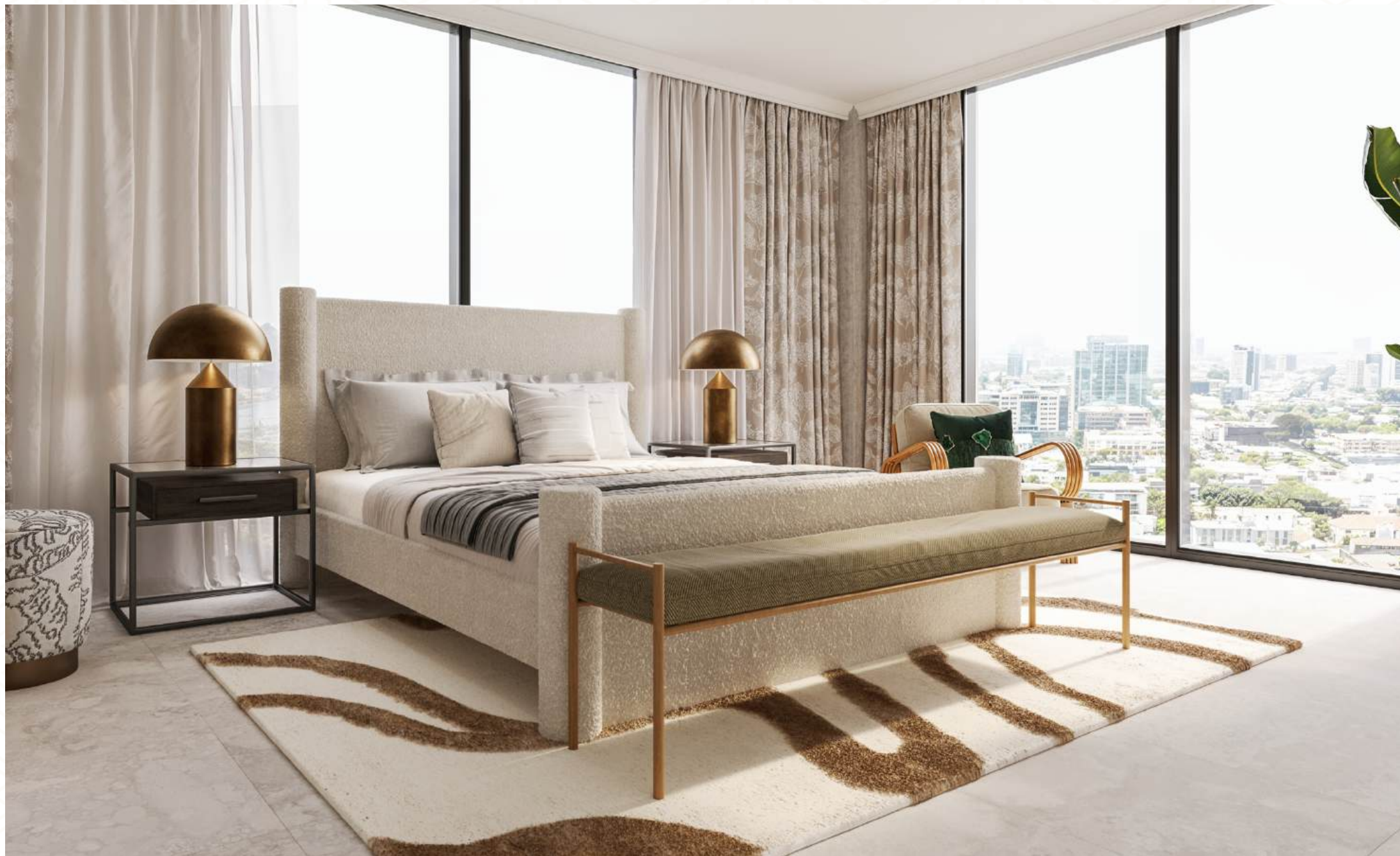




Livingroom



Dinning





AMENITIES THAT DEFINE EXCELLENCE

Indulge in a Lifestyle
Like No Other





Fully Equipped Technogym



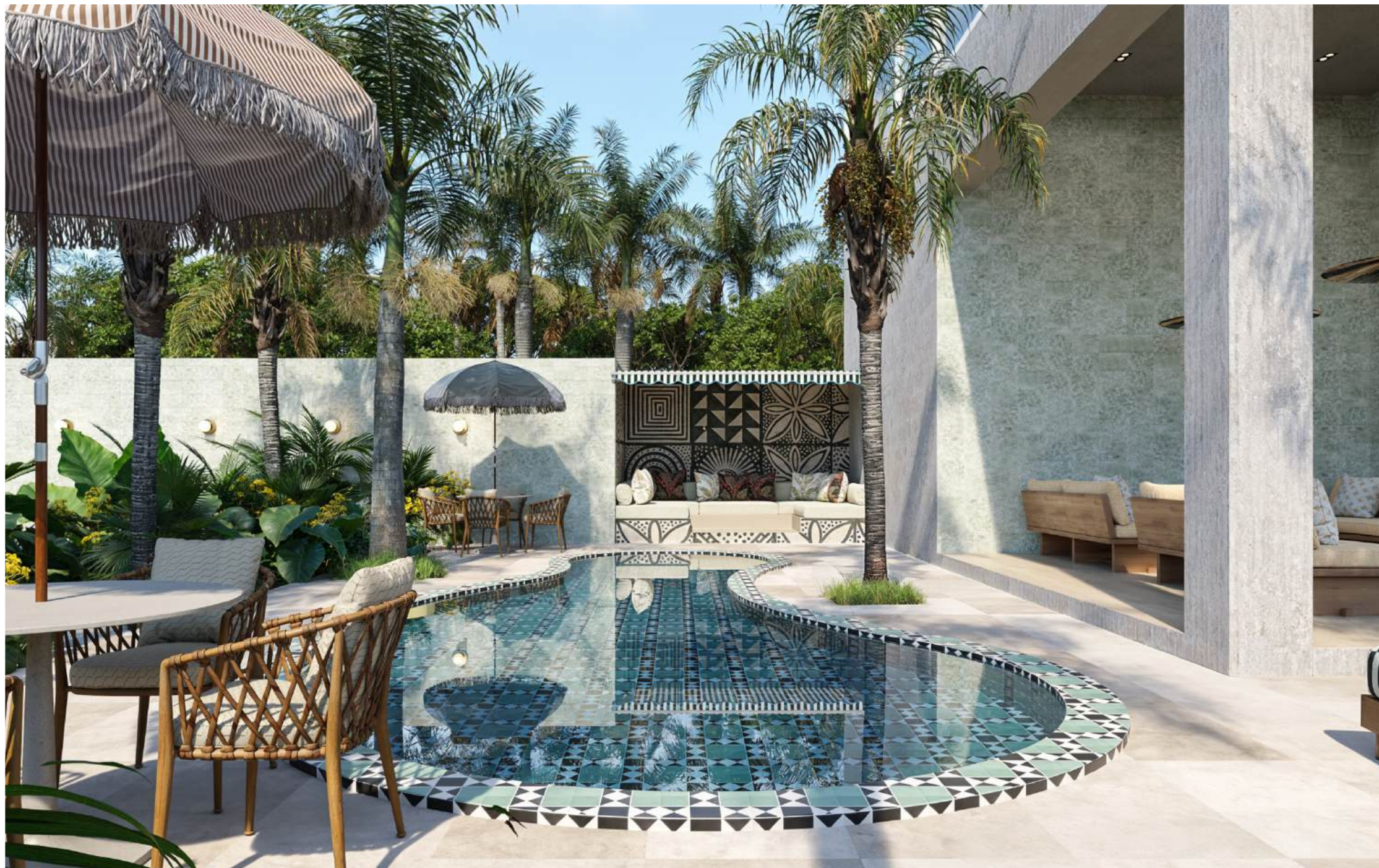
A Welcoming View of The Concierge



Luxury Development Lobby In View



Ultimate Social Lounge For Relaxation



Refreshing Pool View



ELEVATE YOUR EVENINGS

Escape to new heights of relaxation and luxury at the rooftop lounge of Ibeto Heights. With panoramic city views, chic ambiance, and a perfect blend of comfort and style, this exclusive space is designed for those who seek the extraordinary. Whether enjoying a quiet sunset or entertaining guests under the stars, the rooftop lounge offers a lifestyle experience like no other—refined, serene, and truly elevated.

At Ibeto Heights, luxury is woven into every detail. Residents enjoy access to a suite of premier amenities designed to elevate everyday living:



Always at your service to meet your needs.



Relax and connect in a stylish communal space.



Rejuvenate and unwind in a tranquil environment.



Take a refreshing dip with the city skyline as your backdrop.



Enjoy panoramic views of Lagos in an elegant setting.



Equipped to support your wellness goals.



Safe and vibrant spaces designed for the younger residents.



Keeping sustainability at the core with electric vehicle support.

INTELLIGENT, ENERGY-EFFICIENT HOMES

Built for Modern Living and
Environmental Responsibility

Ibeto Heights marries design with innovation, offering a blend of elegance and smart functionality. Each unit is equipped with energy-efficient systems and smart technology for an effortlessly modern lifestyle. From lighting to climate control, every feature in your home is optimized for convenience and sustainability, making Ibeto Heights a forward-thinking choice in luxury.





3 Bed Livingroom Interior

NATURE'S SERENITY

Green Spaces That Inspire

Immerse yourself in nature's serenity with the lush green areas at Ibeto Heights. Thoughtfully designed to complement urban living, these vibrant landscapes offer a tranquil escape for relaxation, recreation, and rejuvenation.





Lush Green Environment



FLOOR PLANS

THOUGHTFUL LAYOUTS FOR EVERY LIFESTYLE

Explore our thoughtfully designed floor plans that cater to diverse lifestyle needs. Each unit layout maximizes space and flow, ensuring residents can enjoy the utmost comfort and privacy. Floor plans available for 2-bedroom, 3-bedroom, and 4-bedroom penthouse units.



FLOOR PLAN: 2 BEDROOM APARTMENT

General Arrangement

Accommodation
Schedule

Living Room	01
Dining Room	01
Kitchen	01
Guest WC	01
Bedroom (En-suite)	02
Balcony	02

2 Bedroom Apartment
Total Area: 120 - 139SQM

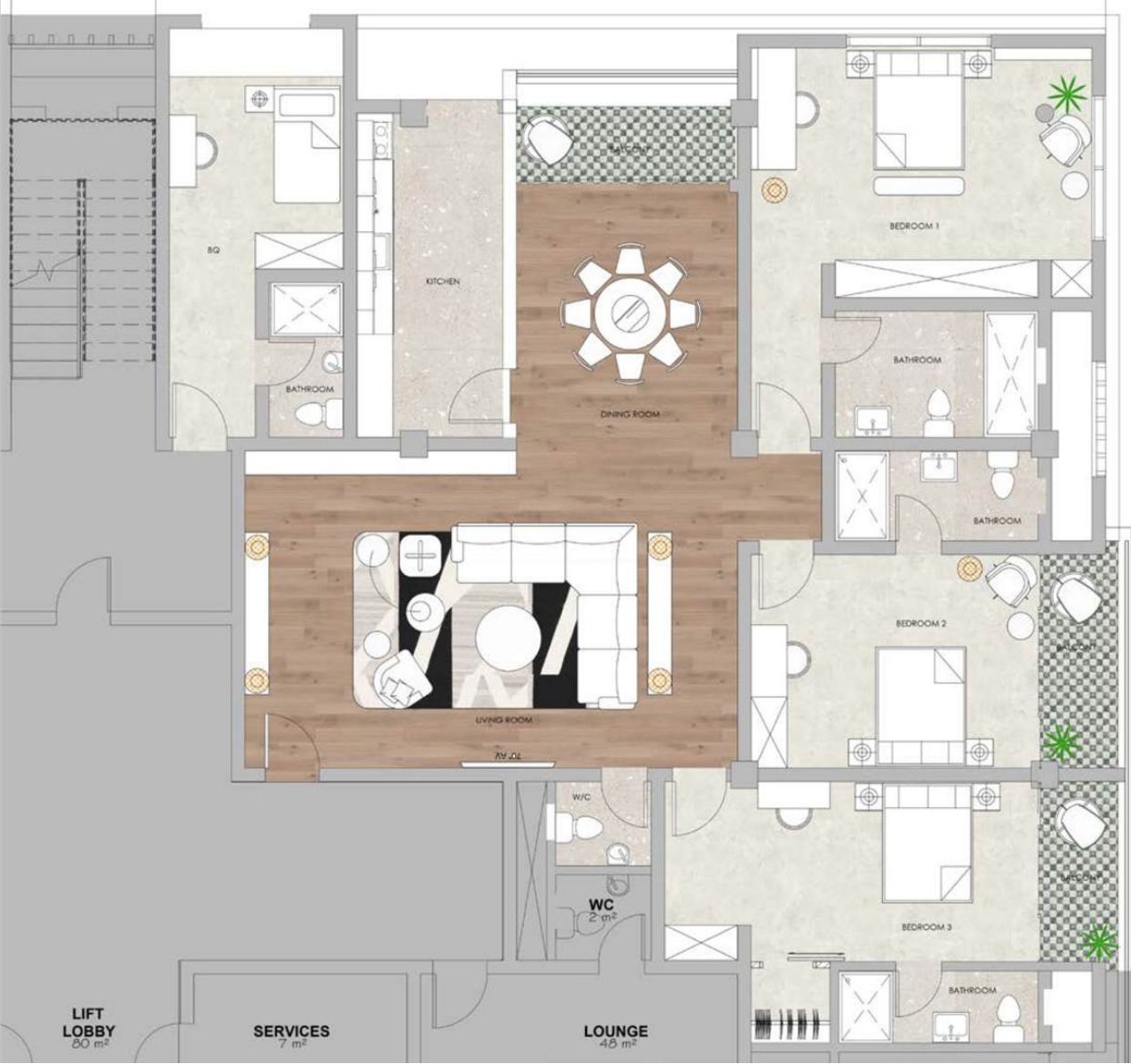


FLOOR PLAN: 3 BEDROOM APARTMENT
General Arrangement

Accommodation
Schedule

Living Room	01
Dining Room	01
Kitchen	01
Guest WC	01
Bedroom (En-suite)	03
Balcony	01
BQ (En-suite)	01

3 Bedroom Apartment
Total Area: 196 SQM / 2,109 SQFT



FLOOR PLAN: 4 BEDROOM PENTHOUSE APARTMENT

General Arrangement

Accommodation Schedule

Ante Room / Foyer	
Living/ Lounge Room	02
Dining Room	01
Kitchen (Opens into a terrace)	01
Guest WC	01
Primary Bedroom (WIC/ Ensuite)	01
Bedroom (En-suite)	03
Study	01
Balcony	01
Box Room	01
BQ (En-suite)	01

Penthouse Apartment
Total Area: 395 SQM / 4,251 SQFT



FLOOR PLAN: AMENITIES FLOOR

General Arrangement



Accommodation Schedule

Gym	01
FitnessRoom	01
WellnessArea	01
Beauty Room	01
Toilet	01

Gym & Beauty Bar
Total Area: 216.5SQM / 2,330 SQFT



FLOOR PLAN: GROUND FLOOR
General Arrangement

Accommodation
Schedule

Concierge (Seats 1)	01
Waiting Area (Seats 4)	01
Lift/ Lobby (3 Lift Cars)	01
Social Lounge (Seats 15)	01
Store Room	01

Please note: Stairs leading to the social lounge have been removed and replaced with a ramp to promote inclusive design.

Ground Floor
Total Area: 130 SQM / 1,400 SQFT



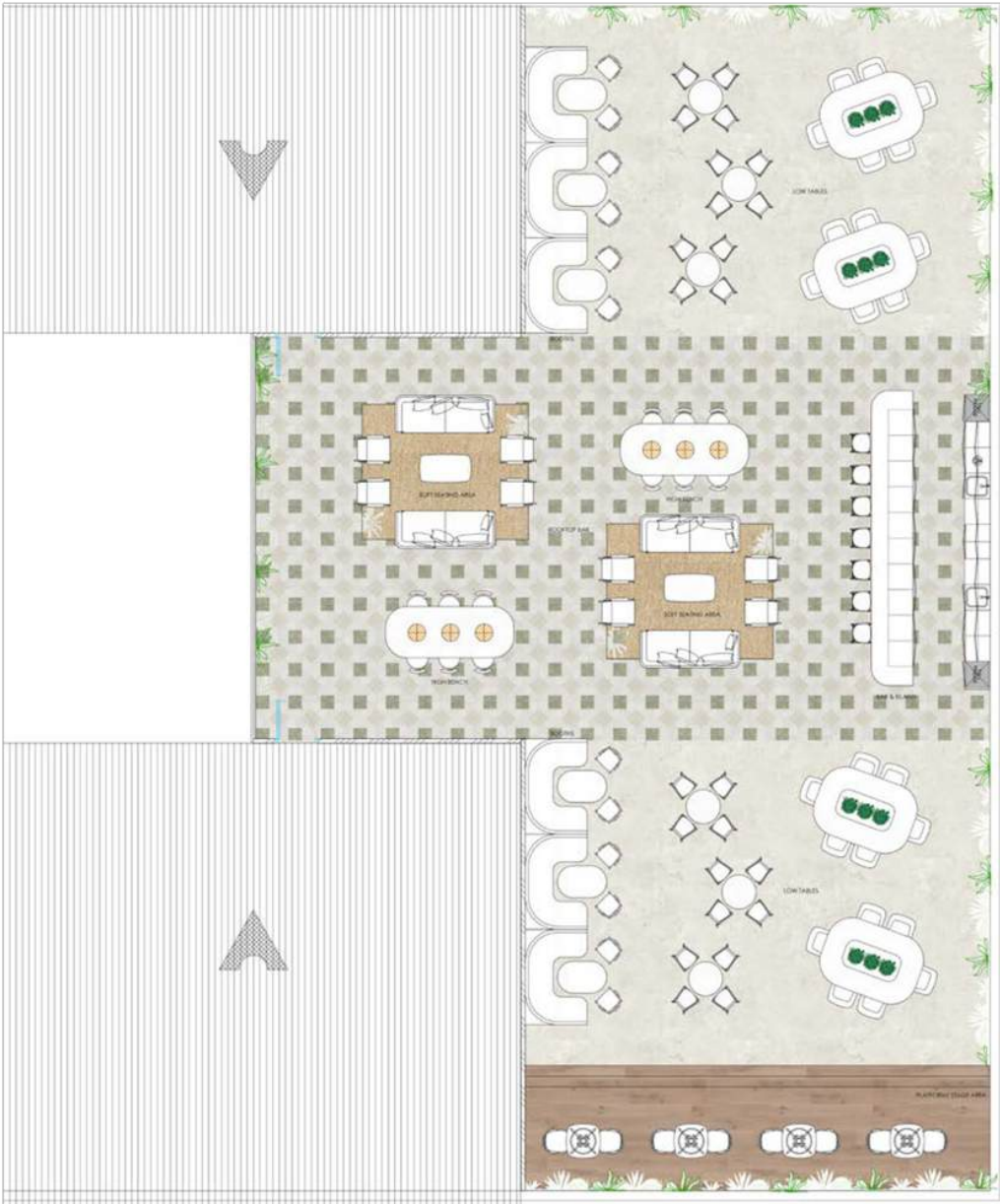
FLOOR PLAN: ROOF DECK

General Arrangement

Accommodation Schedule

Booths (Seats 7)	06
Soft Seating (Seats 10)	02
High Bench (Seats 6)	02
Low Tables (Seats 2-6)	14
Outdoor Kitchen & Bar (Seats 7)	01

Roof Deck Area
Total Area: 362.6 SQM / 3,902 SQFT

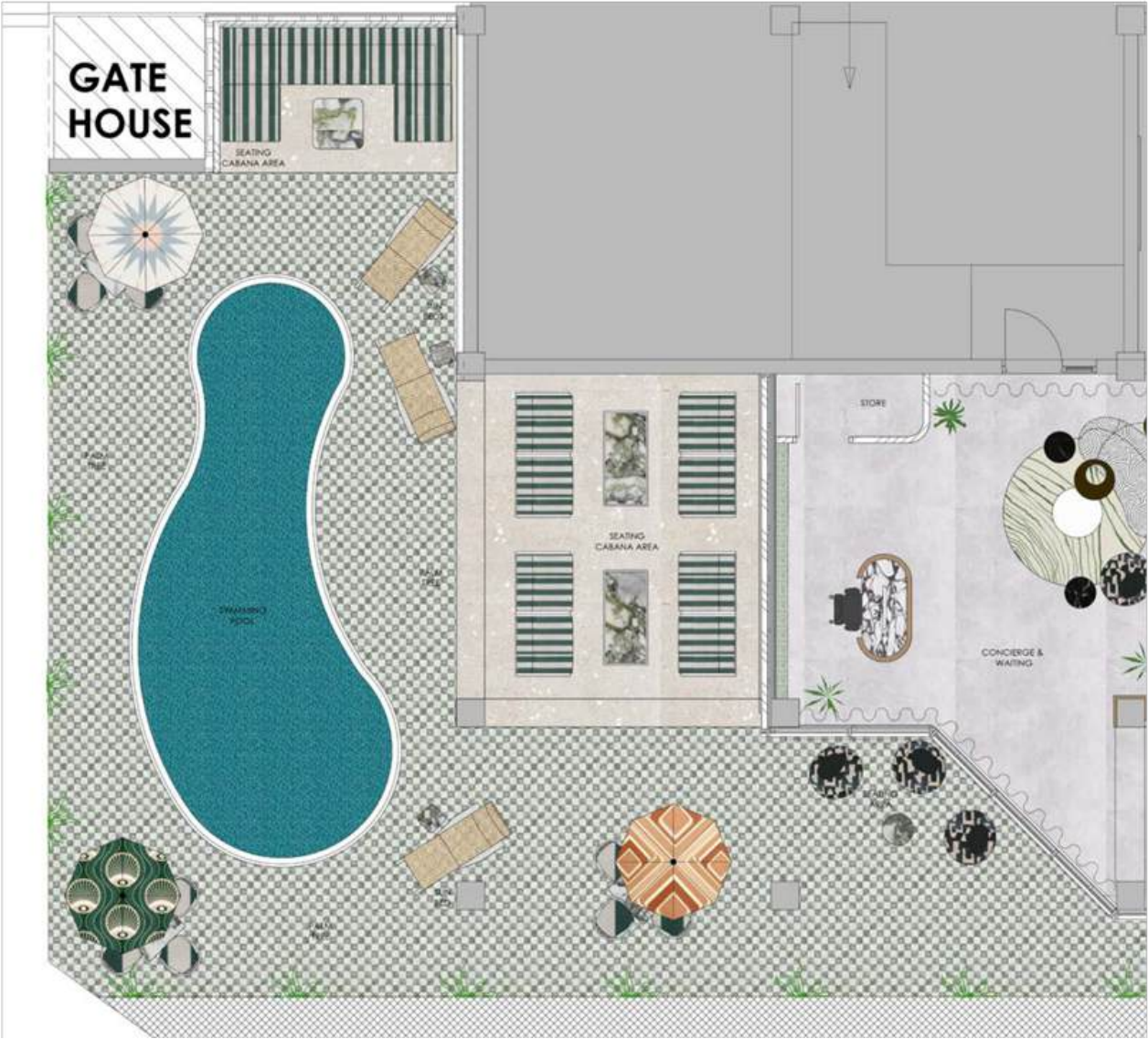


FLOOR PLAN: POOL AREA
General Arrangement

Accommodation
Schedule

Swimming Pool (252 SQFT)	01
Seating Cabana Area (Seats 4-6)	03
Sun Bed	03
Cafe Tables (Seats 4)	03
Seating Area	03

Pool Area
Total Area: 160 SQM / 1,722 SQFT

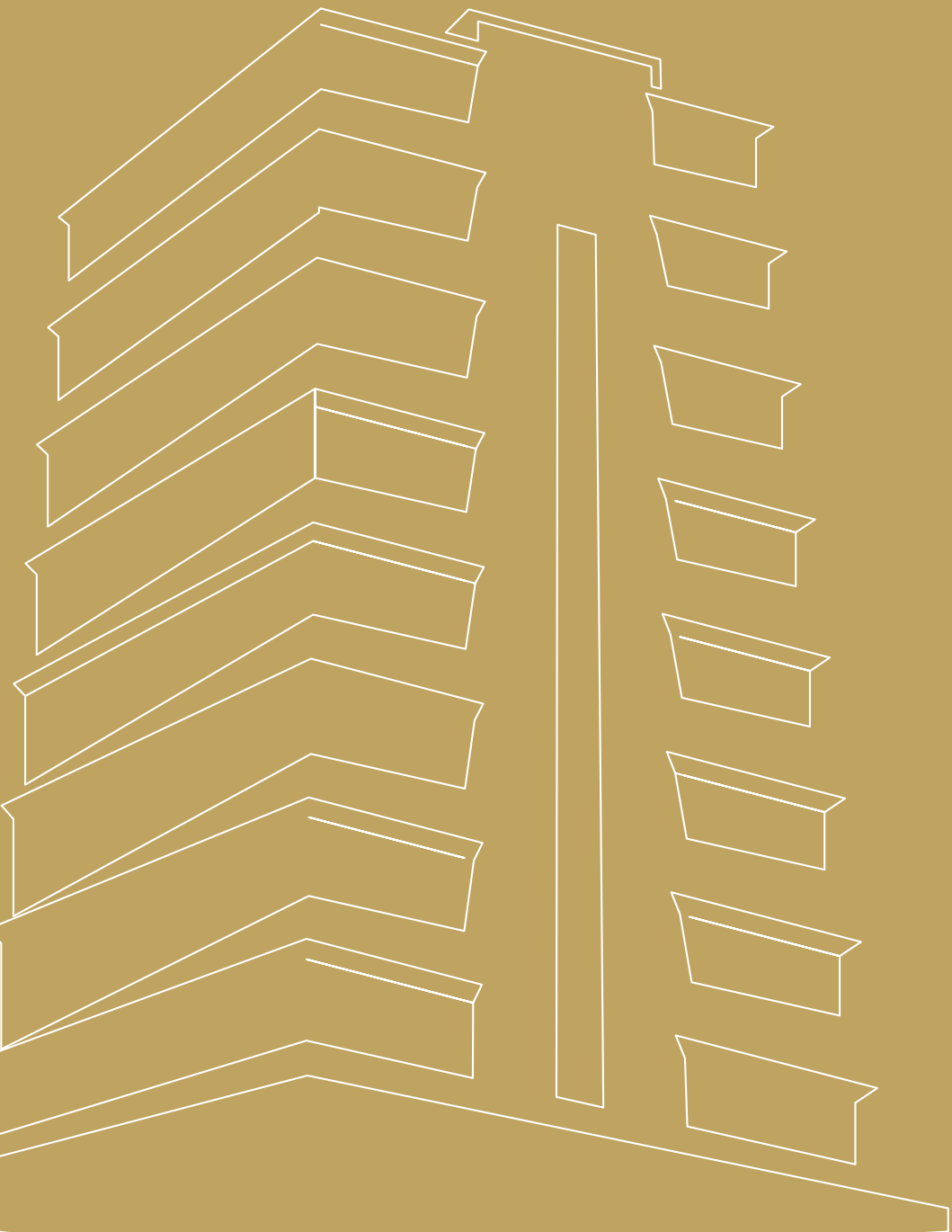




OUR COMMITMENT TO EXCELLENCE

Building the Future of Luxury Real Estate

Elara is a leader in premium real estate development, known for creating iconic, high-quality residences in the most sought-after locations. With a commitment to excellence, innovation, and sustainability, Elara's developments are crafted to enhance lifestyles and elevate community standards.



Construction Team

Developer:
ELARA DEVELOPMENT

General Contractor:
EL-MANSUR ATELIER GROUP

Procurement Consultant:
CUTSTRUCT

Piling Contractor:
AROTECH GEOTECHNICS LTD

Brands



DISCOVER YOUR NEW HOME AT IBETO HEIGHTS

Whether you're seeking a sophisticated residence or a valuable investment, Ibeto Heights is where your journey begins. For inquiries, tours, or more information, please contact:

☎ 0701 093 2363, 0707 699 2326

✉ info@elarabuilds.com

🌐 www.elaradev.com